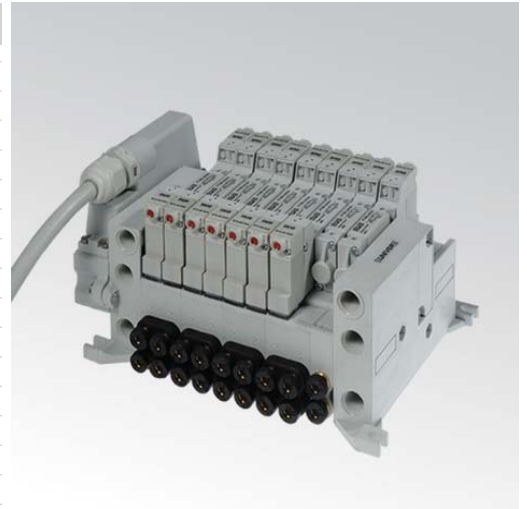


**CHARACTERISTICS**

Ambient temperature	-5 ÷ +50 °C
Fluid	10 µm filtered air, with or without lubrication
Commutation system	spool
Max pressure	9 bar (electrical control) * 10 bar (pneumatic control)
Connections	M5 (P10F) - M5, M7, tube Ø 4 (P10B)
Nominal flow rate (NI/min)	310 (5/2) 230 (5/3) 250 (3/2+3/2)
Valve body	zamak
Seals	NBR
Electropilot	B10 (0,3W) - B11 (1 W)
Spool	aluminium
Voltage	24 V DC (± 10%)
Power consumption	B10 = 0,3 W, Speed-up 1 W (25 ms) B11 = 1 W
Protection degree	IP65
Manual override	recessed button - 1 position



\* = At pressure higher than 7bar with B10 pilot (0.3W) it is recommended to use solenoid valves with external pilot supply

**CODIFICATION KEY**

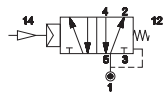
P	1	0	F	2	4	4	2	4	
	1			2	3	4	5	6	

1 Series	2 Type	3 Control 14	4 Return 12
<b>P10F</b> = Threaded body <b>P10B</b> = Body for sub-base mounting	<b>2 = 5/2</b> <b>3 = 5/3 c.c.</b> <b>4 = 5/3 o.c.</b> <b>5 = 5/3 p.c.</b>	<b>6 = 3/2+3/2 NC-NC</b> <b>7 = 3/2+3/2 NC-NO</b> <b>8 = 3/2+3/2 NO-NO</b>	<b>3 = Pneumatic amplified</b> <b>4 = Electrical amplified 90° (0,3W)</b> <b>6 = Electrical amplified 90° (1W)</b>
5 Voltage	6 Option		<b>0 = Pneumomechanical spring</b> <b>1 = Mechanical spring</b> <b>3 = Pneumatic amplified</b> <b>4 = Electrical amplified 90° (0,3W)</b> <b>6 = Electrical amplified 90° (1W)</b>
24 = 24 V DC	D = External pilot supply on valve body (P10 = M3)		

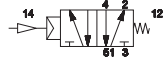
c.c. = closed centres o.c. = open centres p.c. = pressurized centres

**Pneumatic impulse - Threaded connections M5**

## ■ Single impulse

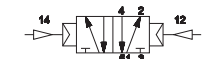


P10F230

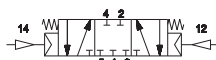


P10F231

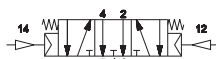
## ■ Double impulse



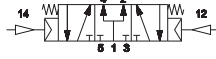
P10F233



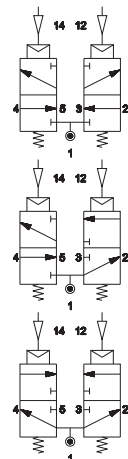
P10F333



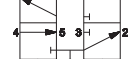
P10F433



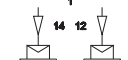
P10F533



P10F633



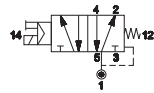
P10F733



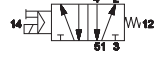
P10F833

Electrical impulse - Threaded connections M5

Single impulse



P10F24024 0,3 W  
P10F26024 1 W



P10F24124 0,3 W  
P10F26124 1 W

B10



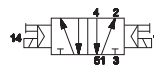
Low power consumption 0,3 W

NEW - B11

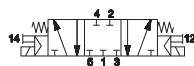


Standard 1 W

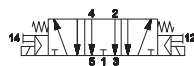
Double impulse



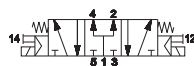
P10F24424 0,3 W  
P10F26624 1 W



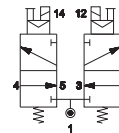
P10F34424 0,3 W  
P10F36624 1 W



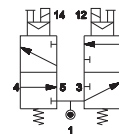
P10F44424 0,3 W  
P10F46624 1 W



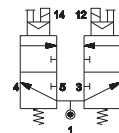
P10F54424 0,3 W  
P10F56624 1 W



P10F64424 0,3 W  
P10F66624 1 W



P10F74424 0,3 W  
P10F76624 1 W

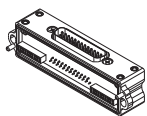


P10F84424 0,3 W  
P10F86624 1 W

Integrated electrical connection

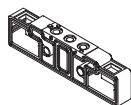


TIM1024



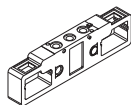
male connection module  
25 poles, type sub-D

P10SF100



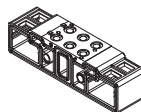
sub-base 1 place

P10SF110



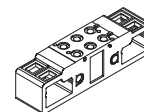
sub-base 1 place  
1-3-5 closed

P10SF200



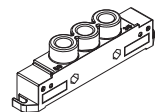
sub-base 2 places

P10SF210



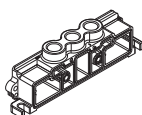
sub-base 2 places  
1-3-5 closed

P10SF500



left supply plate G1/8  
for TIM module

P10SF505



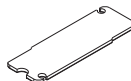
right supply plate G1/8

P10SF550



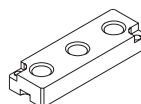
pressure separator

P10SF560



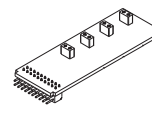
closing plate for unused  
valve place

P10SF570



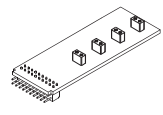
intermediate supply plate  
for threaded version

P10SS14\*\*M



bus connection card,  
side 14  
\*\* = 04, 06, 08, 10, 12 places

P10SS12\*\*M



bus connection card,  
side 12  
\*\* = 04, 06, 08, 10, 12 places

P10STR01



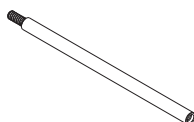
modular tie-rods  
1 valve place

P10STR02



modular tie-rods  
2 valve places

P10STR05



modular tie-rods  
5 valve places

AZ4-SN003A

No. 100 nuts M3 for tie-rods

AZ4-VN0310

No. 100 screws M3x10 for tie-rods

Electrical connection with external connector

3



P10SF300	P10SF310	P10SF400	P10SF410	P10SF515	P10SF550
sub-base 1 place	sub-base 1 place 1-3-5 closed	sub-base 2 places	sub-base 2 places 1-3-5 closed	right/left supply place G1/8	pressure separator
P10SF560	P10SF570	P10STR01	P10STR02	P10STR05	
closing plate for unused valve place	intermediate supply plate for threaded version	modular tie-rods 1 valve place	modular tie-rods 2 valve places	modular tie-rods 5 valve places	

**AZ4-SN003A**

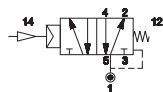
No. 100 nuts M3  
for tie-rods

**AZ4-VN0310**

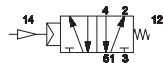
No. 100 screws M3x10  
for tie-rods

Pneumatic impulse - Body for sub-base mounting

■ Single impulse



P10B230

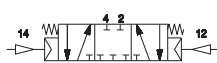


P10B231

■ Double impulse



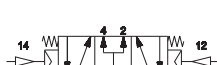
P10B233



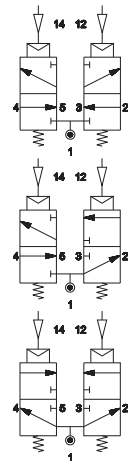
P10B333



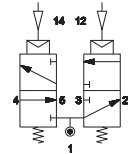
P10B433



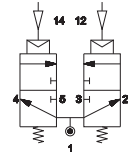
P10B533



P10B633



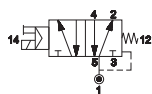
P10B733



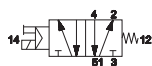
P10B833

Electrical impulse - Body for sub-base mounting


Single impulse



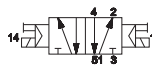
P10B24024 0,3 W  
P10B26024 1 W



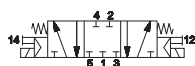
P10B24124 0,3 W  
P10B26124 1 W

	
Low power consumption 0,3 W	Standard 1 W

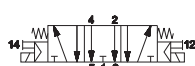
Double impulse



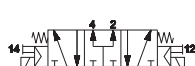
P10B24424 0,3 W  
P10B26624 1 W



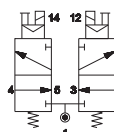
P10B34424 0,3 W  
P10B36624 1 W



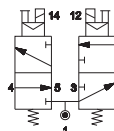
P10B44424 0,3 W  
P10B46624 1 W



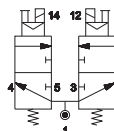
P10B54424 0,3 W  
P10B56624 1 W



P10B64424 0,3 W  
P10B66624 1 W



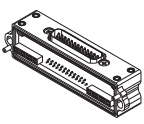
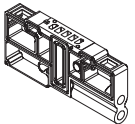
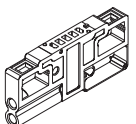
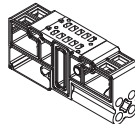
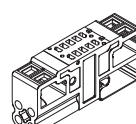
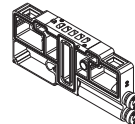
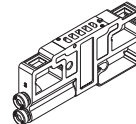
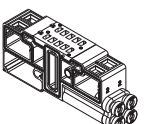
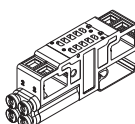
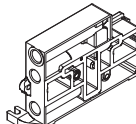
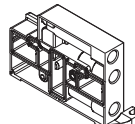

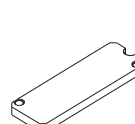
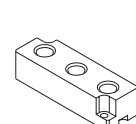
P10B74424 0,3 W  
P10B76624 1 W



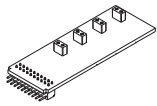
P10B84424 0,3 W  
P10B86624 1 W

Integrated electrical connection



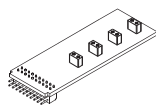
<b>TIM1024</b>  male connection module 25 poles, type sub-D	<b>P10SB100/107</b>  sub-base 1 place side outlets M5, M7	<b>P10SB110/117</b>  sub-base 1 place side outlets M5, M7 1-3-5 closed	<b>P10SB200/207</b>  sub-base 2 places side outlets M5, M7	<b>P10SB210/217</b>  sub-base 2 places side outlets M5, M7 1-3-5 closed	<b>P10SB304</b>  sub-base 1 place side outlets with push-in connections tube 4	<b>P10SB314</b>  sub-base 1 place side outlets with push-in connections tube 4 1-3-5 closed
<b>P10SB404</b>  sub-base 2 places side outlets with push-in connections tube 4	<b>P10SB414</b>  sub-base 2 places side outlets with push-in connections tube 4 1-3-5 closed	<b>P10SB500</b>  supply plate G1/8 for TIM module	<b>P10SB505</b>  right supply plate G1/8	<b>P10SB550</b>  pressure separator	<b>P10SB560</b>  closing plate for unused valve place	<b>P10SB570</b>  intermediate supply plate for sub-base version

**P10SS14\*\*M**



bus connection card, side 14  
\*\* = 04, 06, 08, 10, 12 places

**P10SS12\*\*M**



bus connection card, side 12  
\*\* = 04, 06, 08, 10, 12 places

**P10STR01**



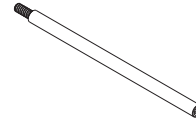
modular tie-rods  
1 valve place

**P10STR02**



modular tie-rods  
2 valve places

**P10STR05**



modular tie-rods  
5 valve places

**AZ4-SN003A**

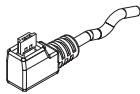
No. 100 nuts M3 for tie-rods

**AZ4-VN0310**

No. 100 screws M3x10 for tie-rods

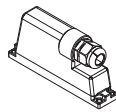
Electrical connections

**D-535U40300**  
**D-535U40500**



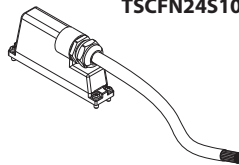
single connector cable 3-5 m

**TSCFN24S000**



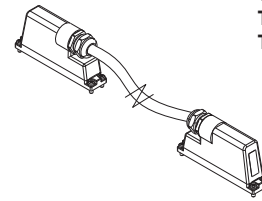
female connector  
25 poles, type sub-D, no cable  
M3x8 fixing screws

**TSCFN24S0300**  
**TSCFN24S0500**  
**TSCFN24S1000**



female connector  
25 poles, type sub-D, prewired for 24  
coils (3-5-10 m length)  
M3x8 fixing screws

**TSCFN16D0300**  
**TSCFN16D0500**  
**TSCFN16D1000**



sub-D male/female flying connector (upon request)  
prewired for 16 coils with cable Ø 8 mm (3-5-10 m length)  
suitable for dynamic laying - M3x8 fixing screws

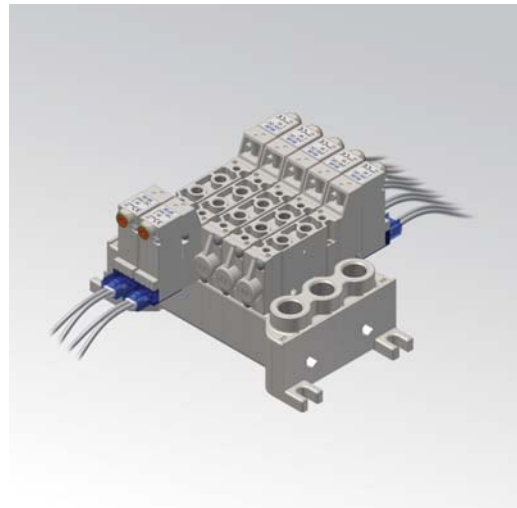
■ TC series Serial Communication System



**CHARACTERISTICS**

Ambient temperature	-5 ÷ +50 °C
Fluid	10 µm filtered air, with or without lubrication
Commutation system	spool
Max pressure	9 bar (electrical control) * 10 bar (pneumatic control)
Connections	M5 (P10F) - M5, M7, tube Ø 4 (P10B)
Nominal flow rate (NI/min)	310 (5/2) 230 (5/3) 250 (3/2+3/2)
Valve body	zamak
Seals	NBR
Electropilot	B10 (0,3W) - B11 (1 W)
Spool	aluminium
Voltage	24 V DC (± 10%)
Power consumption	B10 = 0,3 W, speed -up 1 W (25 ms)    B11 = 1 W
Protection degree	IP65
Manual override	recessed button - 1 position

\* = At pressure higher than 7bar with B10 pilot (0.3W) it is recommended to use solenoid valves with external pilot supply



**CODIFICATION KEY**

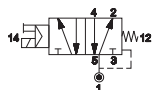
P	1	0	F	2	8	0	2	4	
	1	2	3	4	5	6			

1 Series	2 Type	3 Control 14	4 Return 12
<b>P10F</b> = Threaded body <b>P10B</b> = Body for sub-base mounting	<b>2</b> = 5/2 <b>3</b> = 5/3 c.c. <b>4</b> = 5/3 o.c. <b>5</b> = 5/3 p.c.	<b>6</b> = 3/2+3/2 NC-NC <b>7</b> = 3/2+3/2 NC-NO <b>8</b> = 3/2+3/2 NO-NO <b>8</b> = Electrical amplified in-line (0,3W) <b>9</b> = Electrical amplified in-line (1W)	<b>0</b> = Pneumomechanical spring <b>1</b> = Mechanical spring <b>8</b> = Electrical amplified in-line (0,3W) <b>9</b> = Electrical amplified in-line (1W)
5 Voltage	6 Option		
24 = 24 V DC	D = External pilot supply on valve body (P10 = M3)		

c.c. = closed centres    o.c. = open centres    p.c. = pressurized centres

**Electrical impulse - Threaded connections M5**

■ Single impulse



P10F28024    0,3 W  
P10F29024    1 W



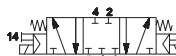
P10F28124    0,3 W  
P10F29124    1 W

B10	NEW - B11
Low power consumption 0,3 W	Standard 1 W

■ Double impulse



P10F28824    0,3 W  
P10F29924    1 W



P10F38824    0,3 W  
P10F39924    1 W



P10F48824    0,3 W  
P10F49924    1 W

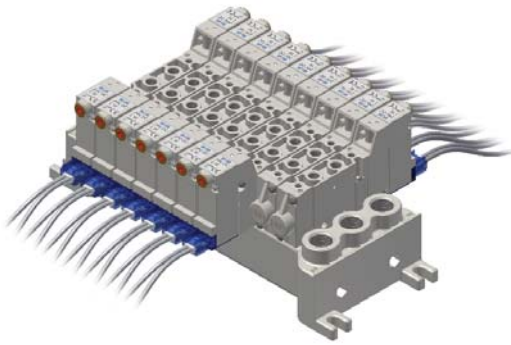


P10F58824    0,3 W  
P10F59924    1 W

	P10F68824    0,3 W P10F69924    1 W
	P10F78824    0,3 W P10F79924    1 W
	P10F88824    0,3 W P10F89924    1 W

Electrical connection with external connector

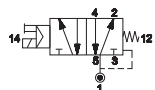
3



<b>P10SF300</b>	<b>P10SF310</b>	<b>P10SF400</b>	<b>P10SF410</b>	<b>P10SF515</b>	<b>P10SF550</b>
sub-base 1 place	sub-base 1 place 1-3-5 closed	sub-base 2 places	sub-base 2 places 1-3-5 closed	right/left supply plate G1/8	pressure separator
<b>P10SF560</b>	<b>P10SF570</b>	<b>P10STR01</b>	<b>P10STR02</b>	<b>P10STR05</b>	
closing plate for unused valve place	intermediate supply plate for threaded version	modular tie-rods 1 valve place	modular tie-rods 2 valve places	modular tie-rods 5 valve places	
					<b>AZ4-SN003A</b> No. 100 nuts M3 for tie-rods  <b>AZ4-VN0310</b> No. 100 screws M3x10 for tie-rods

Electrical impulse - Body for sub-base mounting

Single impulse



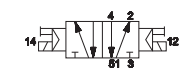
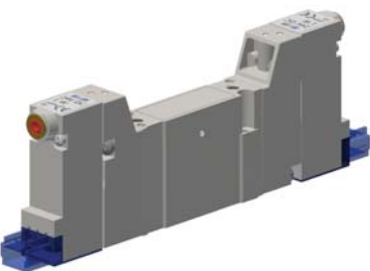
P10B28024 0,3 W  
P10B29024 1 W



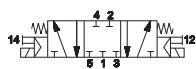
P10B28124 0,3 W  
P10B29124 1 W

<b>B10</b>	<b>NEW - B11</b>
Low power consumption 0,3 W	Standard 1 W

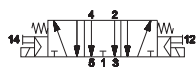
Double impulse



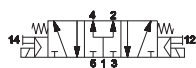
P10B28824 0,3 W  
P10B29924 1 W



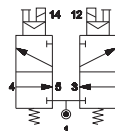
P10B38824 0,3 W  
P10B39924 1 W



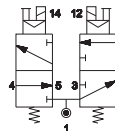
P10B48824 0,3 W  
P10B49924 1 W



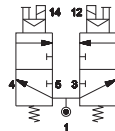
P10B58824 0,3 W  
P10B59924 1 W



P10B68824 0,3 W  
P10B69924 1 W

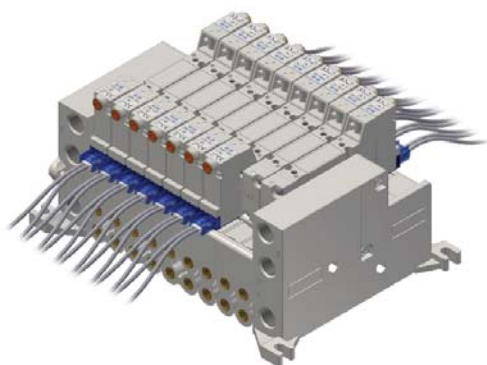


P10B78824 0,3 W  
P10B79924 1 W



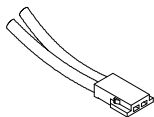
P10B88824 0,3 W  
P10B89924 1 W

Electrical connection with external connector



<b>P10SB100/107</b>	<b>P10SB110/117</b>	<b>P10SB200/207</b>	<b>P10SB210/217</b>	<b>P10SB304</b>	<b>P10SB314</b>
sub-base 1 place side outlets M5, M7	sub-base 1 place side outlets M5, M7 1-3-5 closed	sub-base 2 places side outlets M5, M7	sub-base 2 places side outlets M5, M7 1-3-5 closed	sub-base 1 place side outlets with push-in connections tube 4	sub-base 1 place side outlets with push-in connections tube 4 1-3-5 closed
<b>P10SB404</b>	<b>P10SB414</b>	<b>P10SB502</b>	<b>P10SB505</b>	<b>P10SB550</b>	<b>P10SB560</b>
sub-base 2 places side outlets with push-in connections tube 4	sub-base 2 places side outlets with push-in connections tube 4 1-3-5 closed	supply plate G1/8	right supply plate G1/8	pressure separator	closing plate for unused valve place
<b>P10SB570</b>	<b>P10STR01</b>	<b>P10STR02</b>	<b>P10STR05</b>		
intermediate supply plate for sub-base	modular tie-rods 1 valve place	modular tie-rods 2 valve places	modular tie-rods 5 valve places	<b>AZ4-SN003A</b> No. 100 nuts M3 for tie-rods  <b>AZ4-VN0310</b> No. 100 screws M3x10 for tie-rods	

**D-530-30/50/200**



Miniature connector with loose cables  
**D-530-30** = wire length 300 mm  
**D-530-50** = wire length 500 mm  
**D-530-200** = wire length 2000 mm