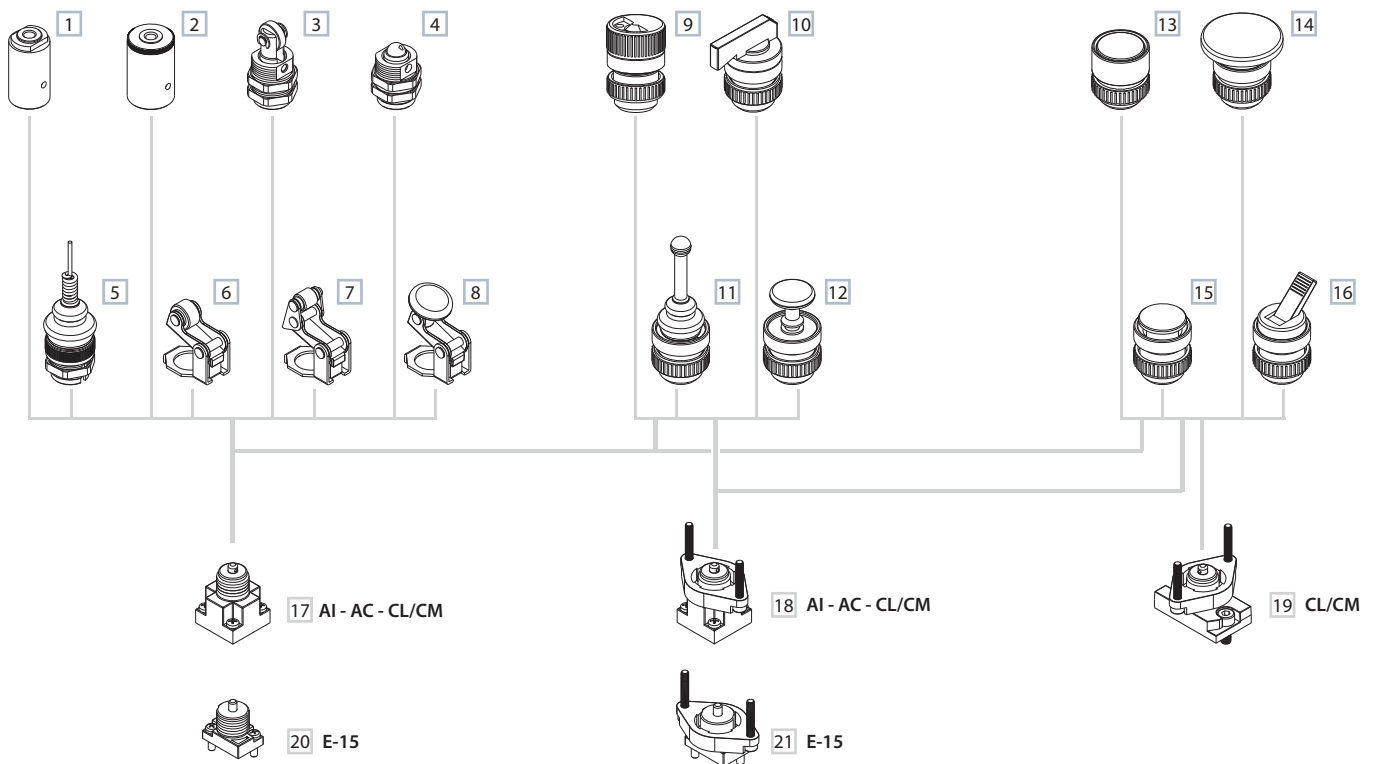


OPERATORS

Manual, pneumatic and mechanical operators for screw and panel mounting



Modular system actuators/buttons



3
VALVES

PNEUMATIC / MECHANICAL ACTUATORS

- 1 Pneumatic actuator
- 2 Amplified pneumatic actuator
- 3 Roller operator 1 position
- 4 Ball-push operator 1 position
- 5 Omni-directional antenna 1 position
- 6 Roller lever operator 1 position
- 7 Articulated roller lever operator 1 position
- 8 Key operator 1 position

MANUAL ACTUATORS

- 9 Rotating selector
- 10 Rotating lever selector
- 11 Omni-directional operator
- 12 Push-pull operator
- 13 Recessed button
- 14 Head button
- 15 Button
- 16 Lever

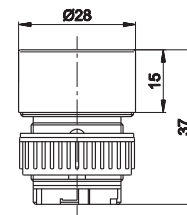
OVERRIDE

- 17 Threaded indirect operation
- 18 Indirect panel operation
- 19 Direct panel operation
- 20 Ball-push direct operation
- 21 Ball-push direct panel operation

Recessed button



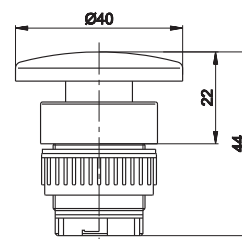
Symbol	Colour	Force ^(a) N	Weight Kg	Part no.
1 POSITION				
	black ■	16	0,031	AI-3511
	red ■	16	0,031	AI-3512
	green ■	16	0,031	AI-3513
FOR PANEL MOUNTING 1 POSITION(b)				
	black ■	16	0,031	AI-3511Q
	red ■	16	0,031	AI-3512Q
	green ■	16	0,031	AI-3513Q



Head button



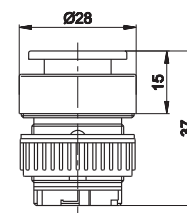
Symbol	Colour	Force ^(a) N	Weight Kg	Part no.
1 POSITION				
	red ■	16	0,022	AI-3514
	black ■	16	0,022	AI-3516
FOR PANEL MOUNTING 1 POSITION (b)				
	red ■	16	0,022	AI-3514Q
	black ■	16	0,022	AI-3516Q
2 POSITIONS				
	red ■	16	0,022	AI-3514D
	black ■	16	0,022	AI-3516D
FOR PANEL MOUNTING 2 POSITIONS (b)				
	red ■	16	0,022	AI-3514QD
	black ■	16	0,022	AI-3516QD



Button



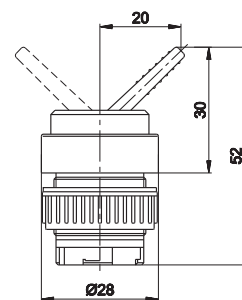
Symbol	Colour	Force ^(a) N	Weight Kg	Part no.
1 POSITION				
	green ■	12,5	0,025	AI-3515
	red ■	12,5	0,025	AI-3517
	black ■	12,5	0,025	AI-3519
FOR PANEL MOUNTING 1 POSITION (b)				
	green ■	12,5	0,025	AI-3515Q
	red ■	12,5	0,025	AI-3517Q
	black ■	12,5	0,025	AI-3519Q



Lever operator



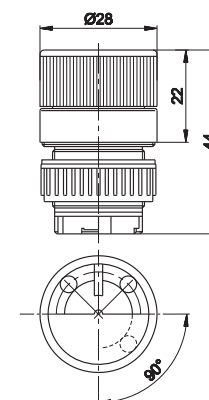
Symbol	Colour	Force ^(a) N	Weight Kg	Part no.
2 POSITIONS				
	black ■	6	0,022	AI-3524
FOR PANEL MOUNTINGS 2 POSITIONS(b)				
	black ■	6	0,022	AI-3524Q



Rotating selector for accident prevention



Symbol	Colour	Force ^(a) N	Weight Kg	Part no.
WITH LIGHT 1 POSITION				
	black ■	12,5	0,025	AI-3521
FOR PANEL MOUNTING WITH LIGHT 1 POSITION (b)				
	black ■	12,5	0,025	AI-3521Q
WITH LIGHT 2 POSITIONS				
	black ■	12,5	0,025	AI-3520
FOR PANEL MOUNTING WITH LIGHT 2 POSITIONS (b)				
	black ■	12,5	0,025	AI-3520Q

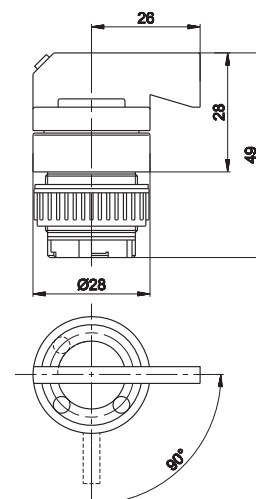


(a) = force at 6 bar with actuators assembled on AI-35.. standard limit switch
 (b) = to be used with valves preset with flange for panel mounting

Rotating lever selector



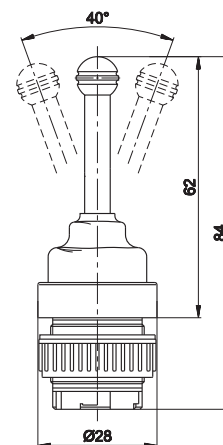
Symbol	Colour	Force (a) N	Weight Kg	Part no.
WITH LIGHT 1 POSITION				
	black ■	12,5	0,025	AI-3523
FOR PANEL MOUNTING WITH LIGHT 1 POSITION (b)				
	black ■	12,5	0,025	AI-3523Q
WITH LIGHT 2 POSITIONS				
	black ■	12,5	0,025	AI-3522
FOR PANEL MOUNTING WITH LIGHT 2 POSITIONS (b)				
	black ■	12,5	0,025	AI-3522Q



Omni-directional operator



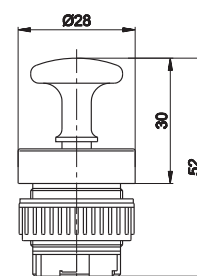
Symbol	Colour	Force (a) N	Weight Kg	Part no.
WITH CENTRE RETURN 1 POSITION				
	black ■	7	0,029	AI-3525
FOR PANEL MOUNTING WITH CENTRE RETURN 1 POSITION (b)				
	black ■	7	0,029	AI-3525Q



Push-pull operator



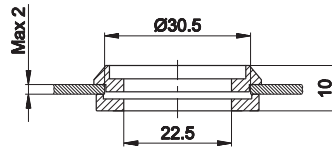
Symbol	Colour	Force (a) N	Weight Kg	Part no.
2 POSITIONS				
	black ■	16	0,029	AI-3526
FOR PANEL MOUNTING 2 POSITIONS (b)				
	black ■	16	0,029	AI-3526Q



(a) = force at 6 bar with actuators assembled on AI-35..standard limit switch
 (b) = to be used with valves preset with flange for panel mounting

Reducer

AI-3529

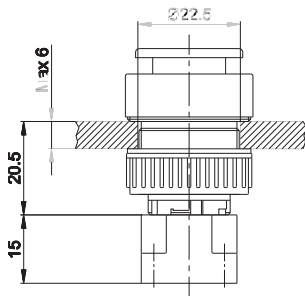


reducer for $\varnothing 30,5$ to $\varnothing 22,5$, to be used with AI-35..Q limit switches
(for details refer to next page)

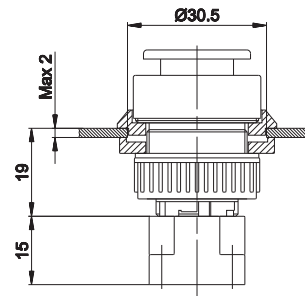
Assembly examples

Manual actuators for screw mounting (ring nut)

Panel mounting for $\varnothing 22,5$ bore sizes

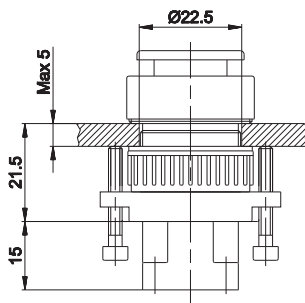


Panel mounting for $\varnothing 30,5$ bore sizes
with reducer AI_3529



Manual actuators for panel mounting (ring nut+screws)

Panel mounting for $\varnothing 22,5$ bore sizes

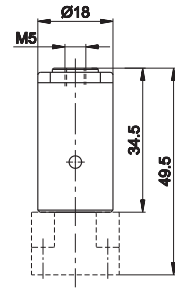


3

Pneumatic operator



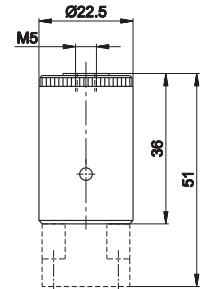
Symbol	Control pressure bar	Operating pressure bar	Weight Kg	Part no.
	1,9÷2,7	1÷9	0,020	AI-3550



Amplified pneumatic operator



Symbol	Control pressure bar	Operating pressure bar	Weight Kg	Part no.
	0,6÷0,9	1÷9	0,030	AI-3551



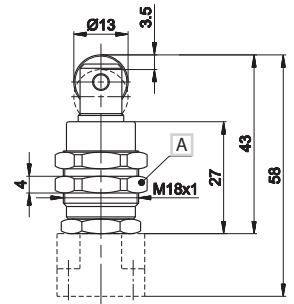
Roller operator



Symbol	Force (a) N	Weight Kg	Part no.
	-	0,031	AI-3560

WITH DUST PROTECTION

Wrench 20



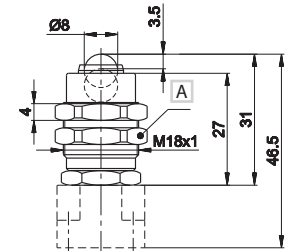
Ball-push operator



Symbol	Force (a) N	Weight Kg	Part no.
	26	0,023	AI-3562

WITH DUST PROTECTION

Wrench 20



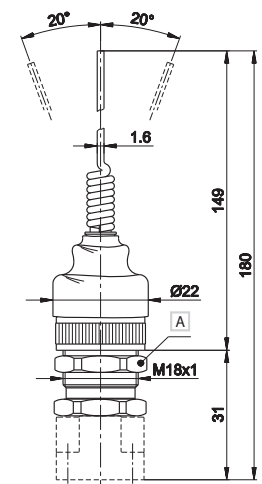
Omni-directional antenna



Symbol	Force (a) N	Weight Kg	Part no.
	3,3	0,034	AI-3563

1 POSITION WITH CENTRE RETURN

Wrench 20



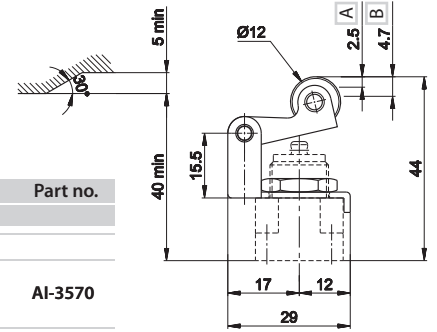
(a) = force at 6 bar with actuators assembled on AI-35..standard limit switch

Roller lever operator



A Max opening
B Total stroke

Symbol	Force (a) N	Weight Kg	Part no.
1 POSITION			
	10	0,021	AI-3570

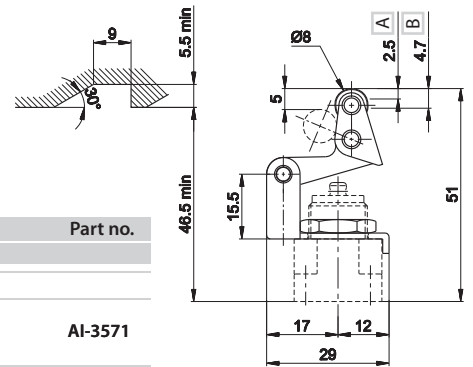


Articulated roller operator



A Max opening
B Total stroke

Symbol	Force (a) N	Weight Kg	Part no.
1 POSITION			
	10	0,021	AI-3571

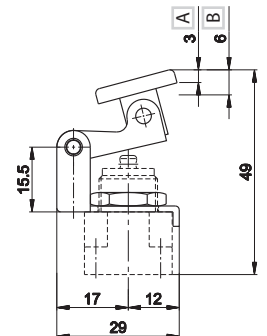


Key operator



A Max opening
B Total stroke

Symbol	Force (a) N	Weight Kg	Part no.
1 POSITION			
	10	0,021	AI-3572



(a) = force at 6 bar with actuators assembled on AI-35..

3