

CHARACTERISTICS

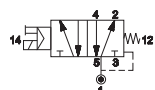
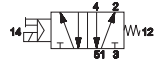
Ambient temperature	-5 ÷ 50 °C
Fluid	10 µm filtered air, with or without lubrication
Commutation system	spool
Max pressure	9 bar
Connections	G1/8
Nominal flow rate (NI/min)	800 (5/2) 720 (5/3) 720 (3/2+3/2)
Valve body	zamak
Seals	NBR
Spool	aluminium
Electropilot	A series (15 mm)
Coil	U05 series
Voltage	12 V DC - 24 V DC - 24 V AC - 48 V AC - 110 V AC - 230 V AC
Power consumption	2 W (DC) 2,3 VA (AC)
Protection degree	IP65
Manual override	impulse screw - 1-2 positions


CODIFICATION KEY

P	1	5	E	F	2	5	5	2	4	
	1	2	3	4	5	6				

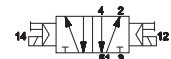
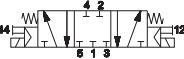
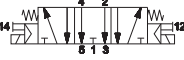
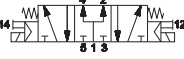
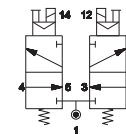
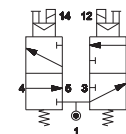
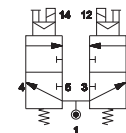
1 Series P15EF = COMPACT Valves - Threaded body G1/8 A series electropilot (15 mm)	2 Type 2 = 5/2 3 = 5/3 c.c. 4 = 5/3 o.c. 5 = 5/3 p.c. 6 = 3/2+3/2 NC-NC 7 = 3/2+3/2 NC-NO 8 = 3/2+3/2 NO-NO	3 Control 14 5 = Electrical amplified 15 mm
4 Return 12 0 = Pneumomechanical spring 1 = Mechanical spring 5 = Electrical amplified 15 mm	5 Voltage 12 = 12 V DC 48 = 48 V AC 24 = 24 V DC 11 = 110 V AC 34 = 24 V AC 23 = 230 V AC	6 Option C = 2-position manual override (upon request) D = External pilot supply

c.c. = closed centres o.c. = open centres p.c. = pressurized centres

Electrical impulse - Threaded connection G1/8
Single impulse

P15EF250**

P15EF251**

DIN C (8 mm)

For further information please contact our Sales Office

Double impulse

P15EF255**

P15EF355**

P15EF455**

P15EF555**

P15EF655**

P15EF755**

P15EF855**

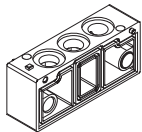
** = Voltage 12 V DC - 24 V DC - 24 V AC - 48 V AC - 110 V AC - 230 V AC (Example: P15EF25024)

Solenoid valves are supplied with coils, without connectors

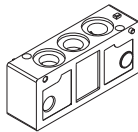
Electrical connection with external connector



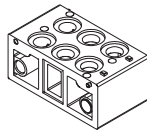
P15SF300 P15SF310 P15SF400 P15SF410 P15SF515 P15SF550 P15SF560



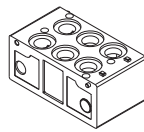
sub-base 1 place



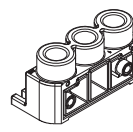
sub-base 1 place
1-3-5 closed



sub-base 2 places



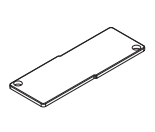
sub-base 2 places
1-3-5 closed



right/left supply plate
G1/4

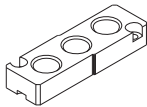


pressure separator



closing plate for
unused valve place

P15SF570 P15STR01 P15STR02 P15STR05



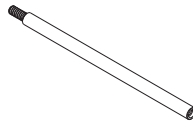
intermediate supply plate
for threaded version



modular tie-rods
1 valve place



modular tie-rods
2 valve places



modular tie-rods
5 valve places

AZ4-SN004A

No. 100 nuts M4 for tie-rods

AZ4-VN0414

No. 100 screws M4x14 for tie-rods

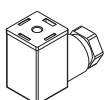
Pre-assembled sub-base



Part No.	Positions
P15SF499-02	2
P15SF499-03	3
P15SF499-04	4
P15SF499-05	5
P15SF499-06	6
P15SF499-07	7
P15SF499-08	8
P15SF499-09	9
P15SF499-10	10

Pre-assembled sub-bases include seals and screws for valve assembly

Electrical connections



AM-5109

15 mm connector

CHARACTERISTICS

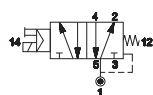
Ambient temperature	-5 ÷ 50 °C
Fluid	10 µm filtered air, with or without lubrication
Commutation system	spool
Max pressure	9 bar
Connections	G1/8
Nominal flow rate (NI/min)	800 (5/2) 720 (5/3) 720 (3/2+3/2)
Valve body	zamak
Seals	NBR
Spool	aluminium
Electropilot	A series (15 mm)
Coil	U05 series
Voltage	12 V DC - 24 V DC - 24 V AC - 48 V AC - 110 V AC - 230 V AC
Power consumption	2 W (DC) 2,3 VA (AC)
Protection degree	IP65
Manual override	impulse screw - 1-2 positions


CODIFICATION KEY

P	1	5	E	B	2	5	5	2	4	
	1	2	3	4	5	6				

1 Series P15EB = COMPACT Valves for sub-base mounting A series electropilot (15 mm)	2 Type 2 = 5/2 3 = 5/3 c.c. 4 = 5/3 o.c. 5 = 5/3 p.c.	3 Control 14 5 = Electrical amplified 15 mm
4 Return 12 0 = Pneumomechanical spring 1 = Mechanical spring 5 = Electrical amplified 15 mm	5 Voltage 12 = 12 V DC 48 = 48 V AC 24 = 24 V DC 11 = 110 V AC 54 = 24 V AC 23 = 230 V AC	6 Variant C = 2-position manual override (upon request) D = External pilot supply

c.c. = closed centres o.c. = open centres p.c. = pressurized centres

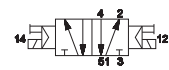
Electrical impulse - Body for sub-base mounting - 15 mm connector
Single impulse


P15EB250**

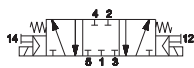


P15EB251**

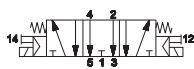

DIN C (8 mm)
 For further information please contact our Sales Office

Double impulse


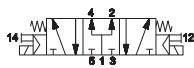
P15EB255**



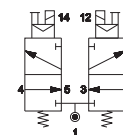
P15EB355**



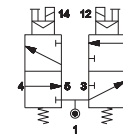
P15EB455**



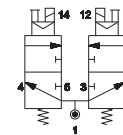
P15EB555**



P15EB655**



P15EB755**



P15EB855**

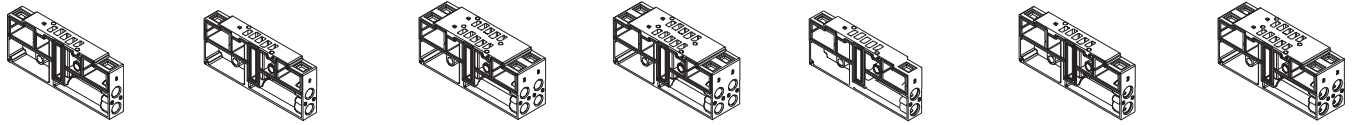
** = Voltage 12 V DC - 24 V DC - 24 V AC - 48 V AC - 110 V AC - 230 V AC (Example: P15EB25024)

Solenoid valves are supplied with coils, without connectors

Electrical connection with external connector

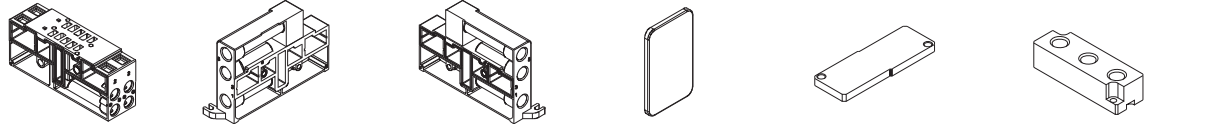


P15SB100 P15SB110 P15SB200 P15SB210 P15SB300 P15SB310 P15SB400



sub-base 1 place side outlets G1/8	sub-base 1 place side outlets G1/8 1-3-5 closed	sub-base 2 places side outlets G1/8	sub-base 2 places side outlets G1/8 1-3-5 closed	sub-base 1 place side outlets for GZR push-in fittings	sub-base 1 place side outlets for GZR push-in fittings 1-3-5 closed	sub-base 2 places side outlets for GZR push-in fittings
------------------------------------	---	-------------------------------------	--	--	---	---

P15SB410 P15SB504 P15SB505 P15SB550 P15SB560 P15SB570



sub-base 2 places side outlets for GZR push-in fittings 1-3-5 closed	left supply plate G1/4	right supply plate G1/4	pressure separator	closing plate for unused valve place	intermediate supply plate for sub-base
--	------------------------	-------------------------	--------------------	--------------------------------------	--

P15STR01 P15STR02 P15STR05 GZR-V10004/06/08



modular tie-rods 1 valve place	modular tie-rods 2 valve places	modular tie-rods 5 valve places	straight fitting GZR-V10004 = tube Ø4 mm GZR-V10006 = tube Ø6 mm GZR-V10008 = tube Ø8 mm
--------------------------------	---------------------------------	---------------------------------	---

AZ4-SN004A
No. 100 nuts M4 for tie-rods

AZ4-VN0414
No. 100 screws M4x14 for tie-rods

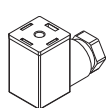
Pre-assembled sub-base



Part No.	Positions
P15SB499-02	2
P15SB499-03	3
P15SB499-04	4
P15SB499-05	5
P15SB499-06	6
P15SB499-07	7
P15SB499-08	8
P15SB499-09	9
P15SB499-10	10

Pre-assembled sub-bases include seals and screws for valve assembly

Electrical connections



AM-5109

15 mm connector