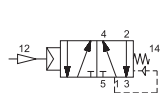


**CHARACTERISTICS**

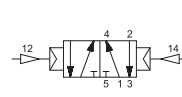
Ambient temperature	-10 ÷ +50 °C	
Fluid	50 µm filtered air, with or without lubrication	
Commutation system	mixed	
Max pressure	10 bar	
Connections	ISO 5599/1 interface (BF series sub-bases)	
Nominal bore (mm)	size 1	size 2
Nominal flow rate (NI/min)	8	10
Valve body	acetalic resin	
Seals	NBR, polyurethane	
Electropilot/Coil	AA series/U1	
Power consumption	3,5 W (DC) - 5 VA (AC)	
Voltage	12 V DC - 24 V DC - 24 V AC - 110 V AC - 230 V AC	
Connector	AM-5110	
Manual override	impulse screw - 2 positions	



**Single/double pneumatic impulse**

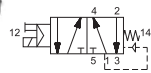


size  
**AE-1009** 1  
**AE-1120** 2



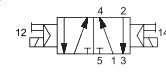
size  
**AE-1010** 1  
**AE-1121** 2

**Single electrical impulse**



size  
**AE-1000** 1  
**AE-1100** 2

**Double electrical impulse**



size  
**AE-1003** 1  
**AE-1103** 2

**ISO 1 Sub-base and plate**



**BF-1060**  
G1/8



**BF-1061**  
G1/4



**BF-1062**  
G1/8



**BF-1063**  
G1/4



**BF-1065** On top  
**BF-1066** Rear  
**BF-1068** In line  
G3/8



**BF-1070**

**ISO 2 Sub-base and plate**



**BF-1150**  
G1/4



**BF-1151**  
G3/8



**BF-1152**  
G1/4



**BF-1153**  
G3/8



**BF-1160**  
G1/4



**BF-1161**  
G3/8



**BF-1162**